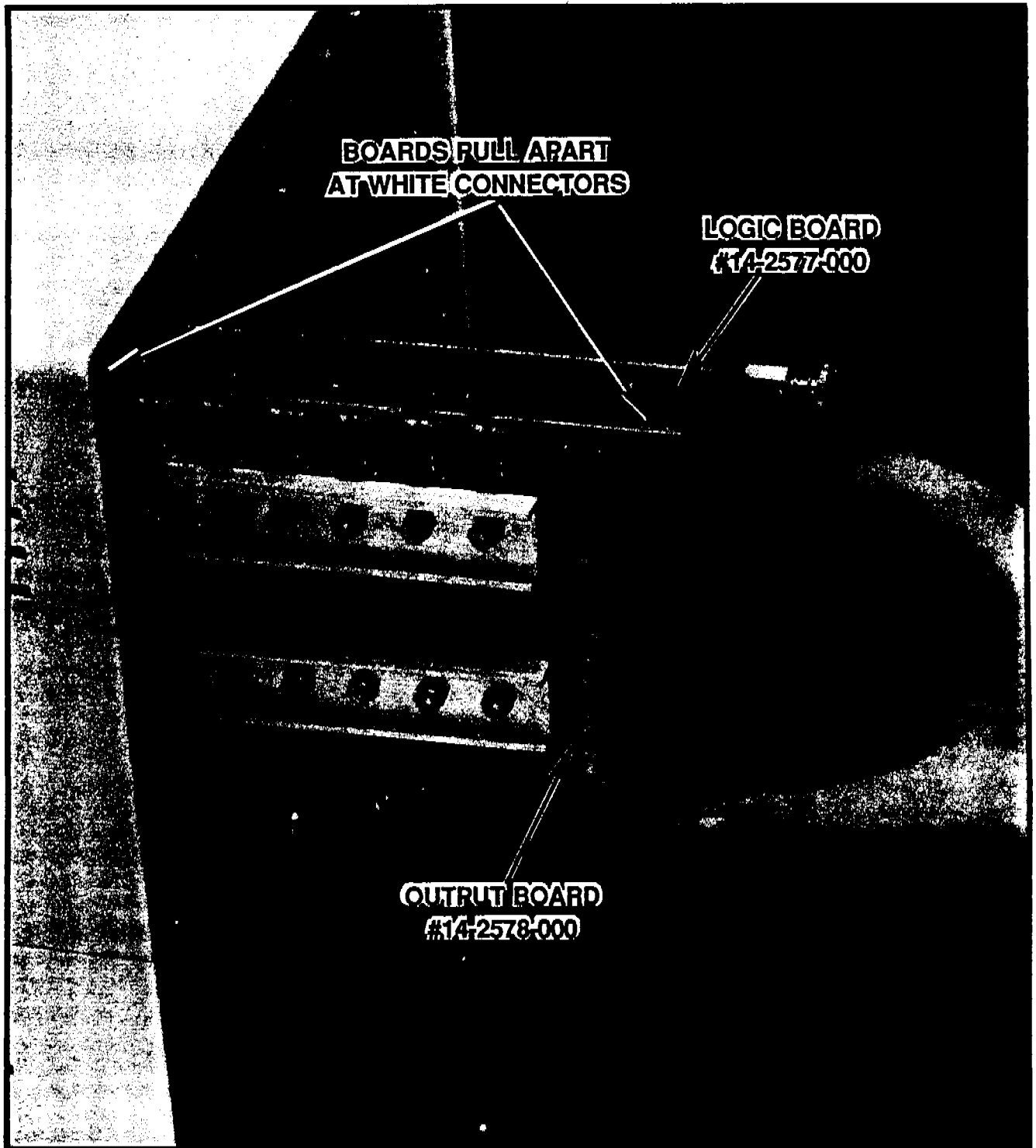


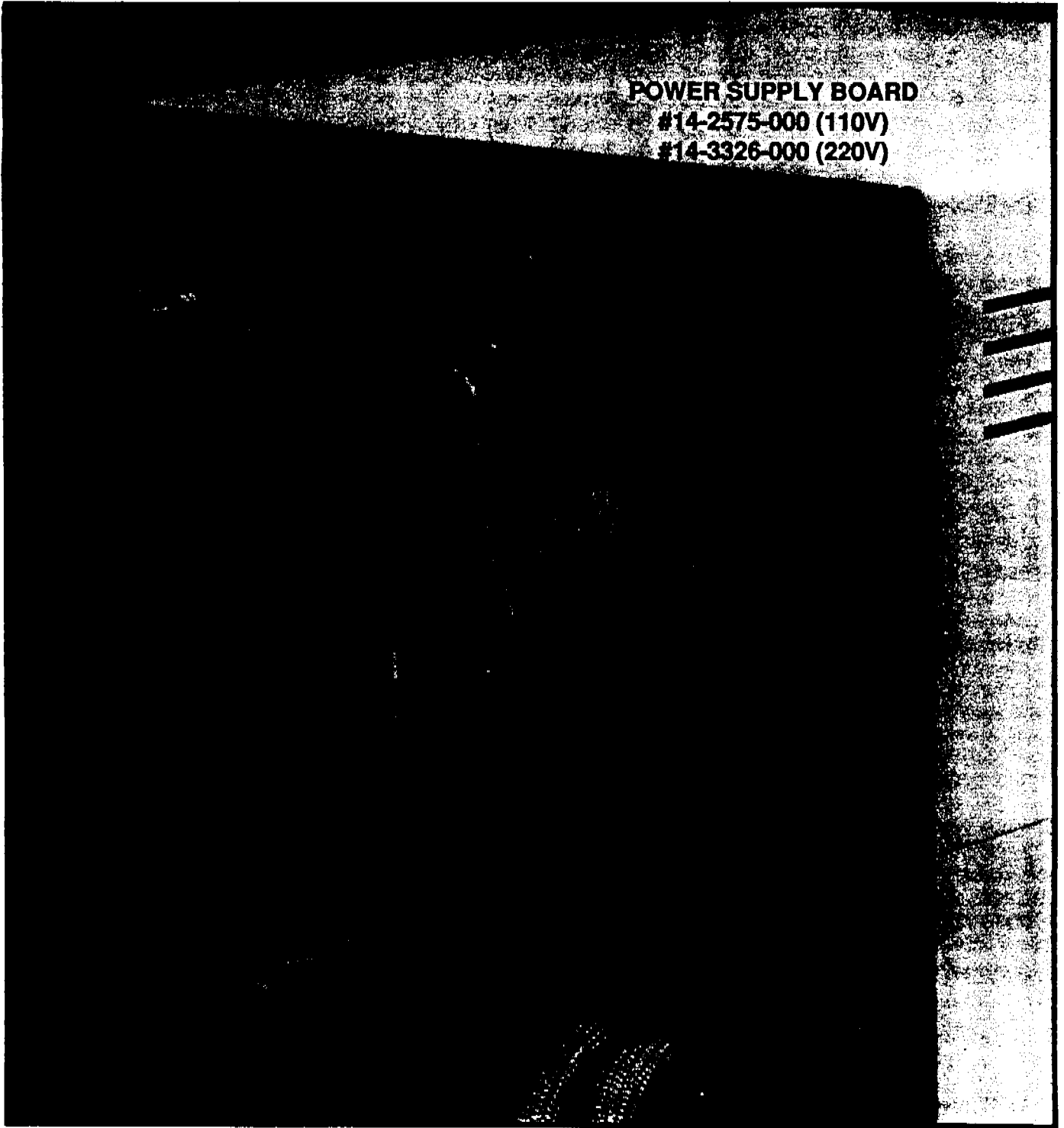
Tekmar®



LSC 2000 LOGIC & OUTPUT BOARDS



Tekmar[®]



POWER SUPPLY BOARD

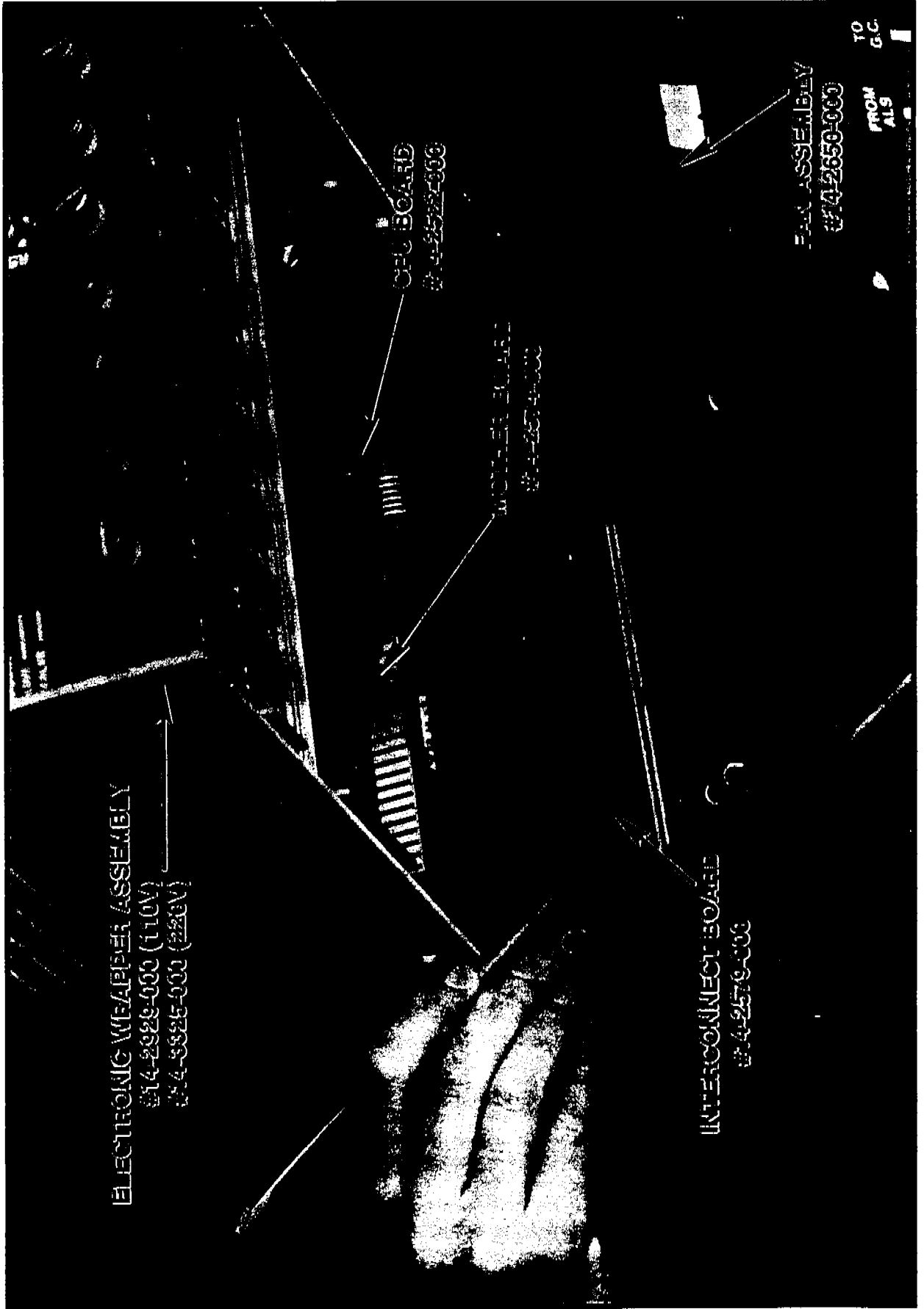
#14-2575-000 (110V)

#14-3326-000 (220V)

LSC 2000 POWER SUPPLY BOARD



Tekmar®



ELECTRONIC WEAPON ASSEMBLY
#14-2929-000 (110V)
#14-3325-000 (220V)

CPU BOARD
#14-2522-000

MOTHER BOARD
#14-2524-000

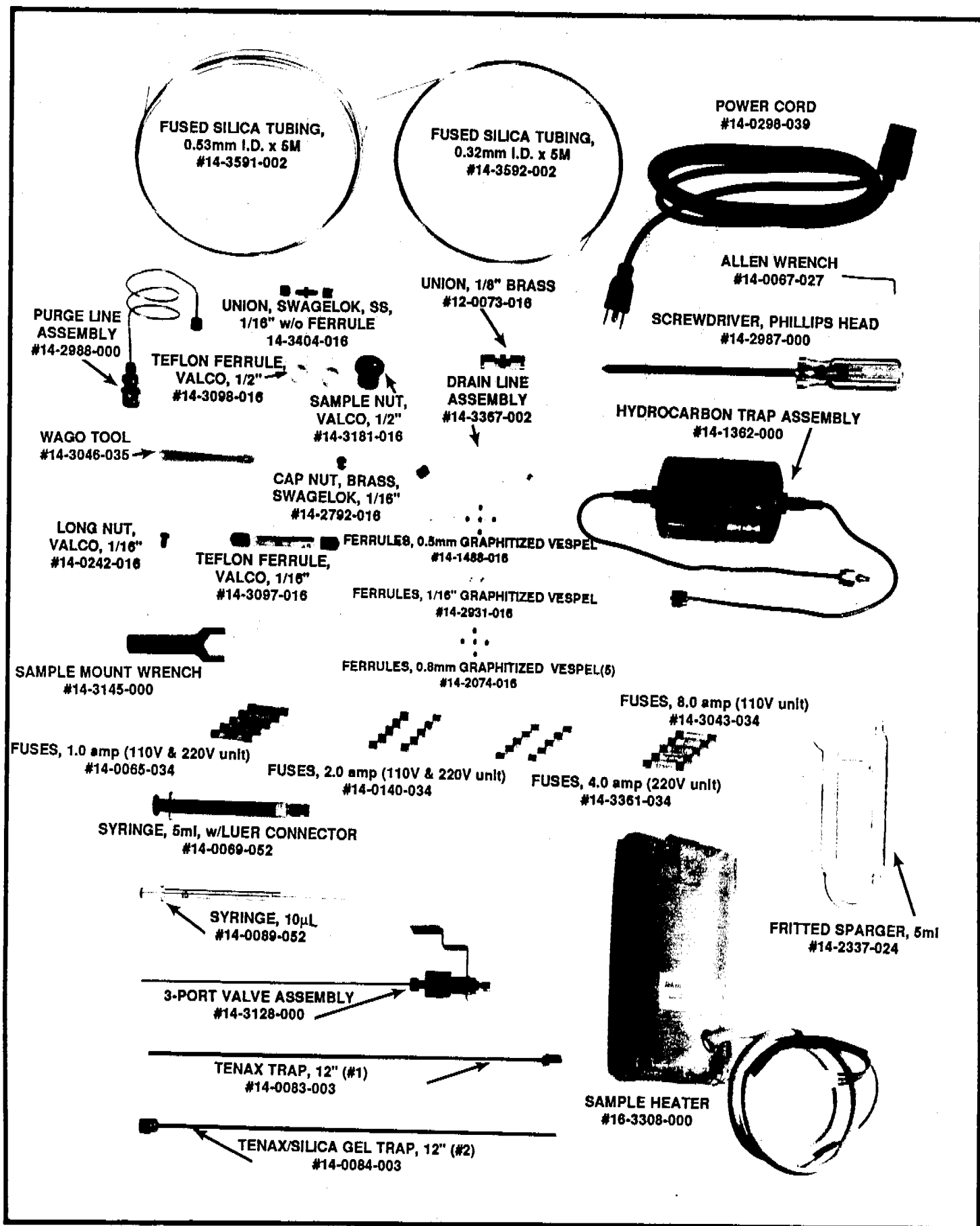
INTERCONNECT BOARD
#14-2570-000

FAN ASSEMBLY
#14-2650-000

TO G.C.
FROM ALS

LSC 2000 ELECTRONICS MODULE CONNECTION





FUSED SILICA TUBING,
0.53mm I.D. x 5M
#14-3591-002

FUSED SILICA TUBING,
0.32mm I.D. x 5M
#14-3592-002

POWER CORD
#14-0298-039

PURGE LINE
ASSEMBLY
#14-2988-000

UNION, SWAGELOK, SS,
1/16" w/o FERRULE
14-3404-016

UNION, 1/8" BRASS
#12-0073-016

ALLEN WRENCH
#14-0067-027

SCREWDRIVER, PHILLIPS HEAD
#14-2987-000

TEFLON FERRULE,
VALCO, 1/2"
#14-3098-016

SAMPLE NUT,
VALCO, 1/2"
#14-3181-016

DRAIN LINE
ASSEMBLY
#14-3367-002

HYDROCARBON TRAP ASSEMBLY
#14-1362-000

WAGO TOOL
#14-3046-035

CAP NUT, BRASS,
SWAGELOK, 1/16"
#14-2792-016

LONG NUT,
VALCO, 1/16"
#14-0242-016

FERRULES, 0.5mm GRAPHITIZED VESPEL
#14-1488-016

TEFLON FERRULE,
VALCO, 1/16"
#14-3097-016

FERRULES, 1/16" GRAPHITIZED VESPEL
#14-2931-016



SAMPLE MOUNT WRENCH
#14-3145-000

FERRULES, 0.8mm GRAPHITIZED VESPEL(5)
#14-2074-016

FUSES, 8.0 amp (110V unit)
#14-3043-034

FUSES, 1.0 amp (110V & 220V unit)
#14-0085-034

FUSES, 2.0 amp (110V & 220V unit)
#14-0140-034

FUSES, 4.0 amp (220V unit)
#14-3361-034

SYRINGE, 5ml, w/LUER CONNECTOR
#14-0089-052

SYRINGE, 10µL
#14-0089-052

FRITTED SPARGER, 5ml
#14-2337-024

3-PORT VALVE ASSEMBLY
#14-3128-000

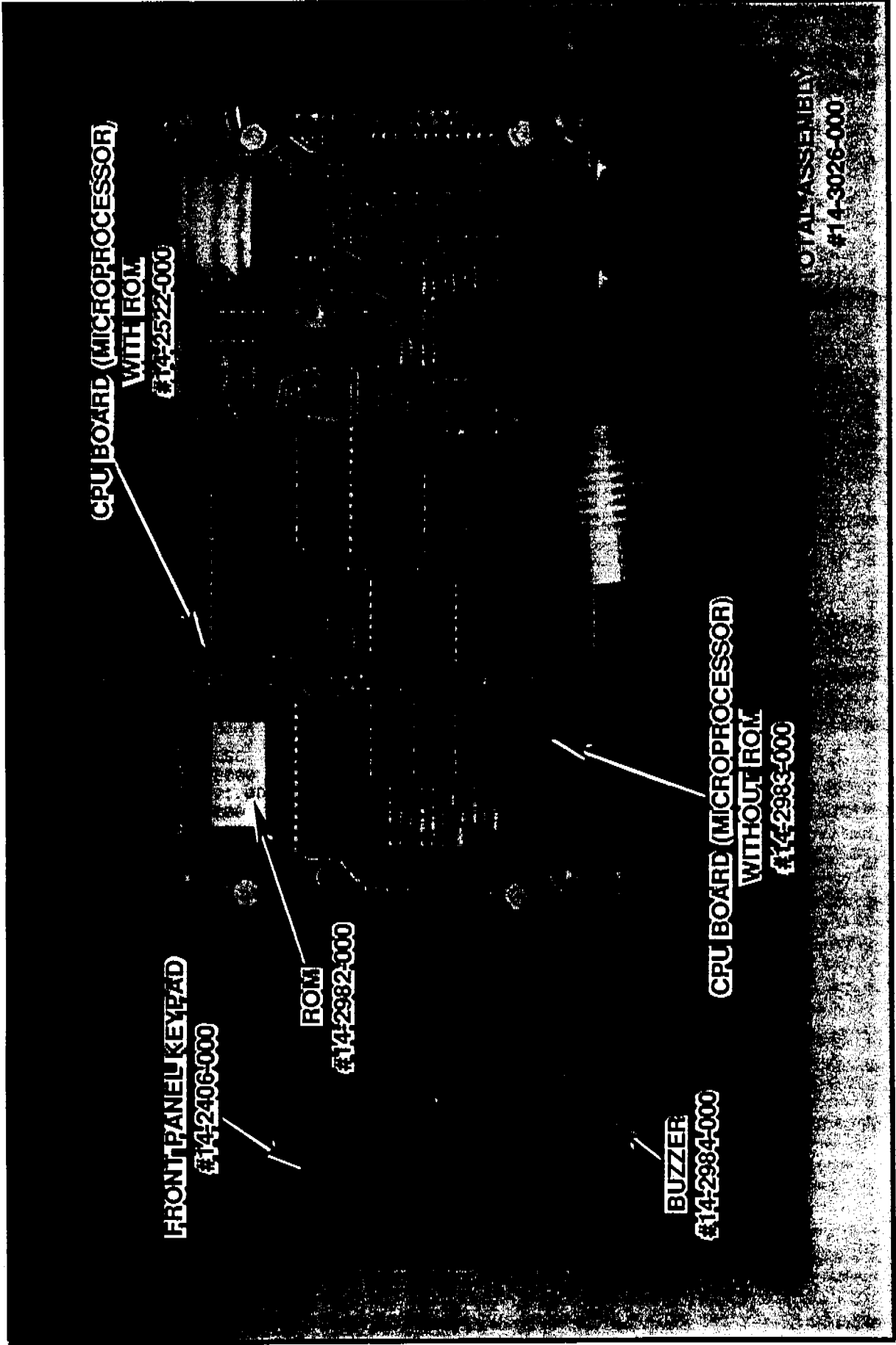
TENAX TRAP, 12" (#1)
#14-0083-003

SAMPLE HEATER
#16-3308-000

TENAX/SILICA GEL TRAP, 12" (#2)
#14-0084-003



Tekmar®



LSC 2000 CPU BOARD & KEYPAD



OUTPUTS							
MODES	PURGE VALVE	VENT VALVE	HRP VALVE	DRAIN VALVE	BYPASS VALVE	SIX PORT VALVE	TRAP FAN
START-UP						P	☼
STANDBY						P	☼
PURGE READY						P	☼
PURGE	☼	☼				P	☼
DRY PURGE	☼	☼			☼	P	☼
DESORB READY						P	☼
DESORB PREHEAT						P	
DESORB						D	
DESORB W/DRAIN	☼		☼	☼		D	
BAKE	☼	☼				P	
BAKE W/BGB	☼	☼			☼	P	

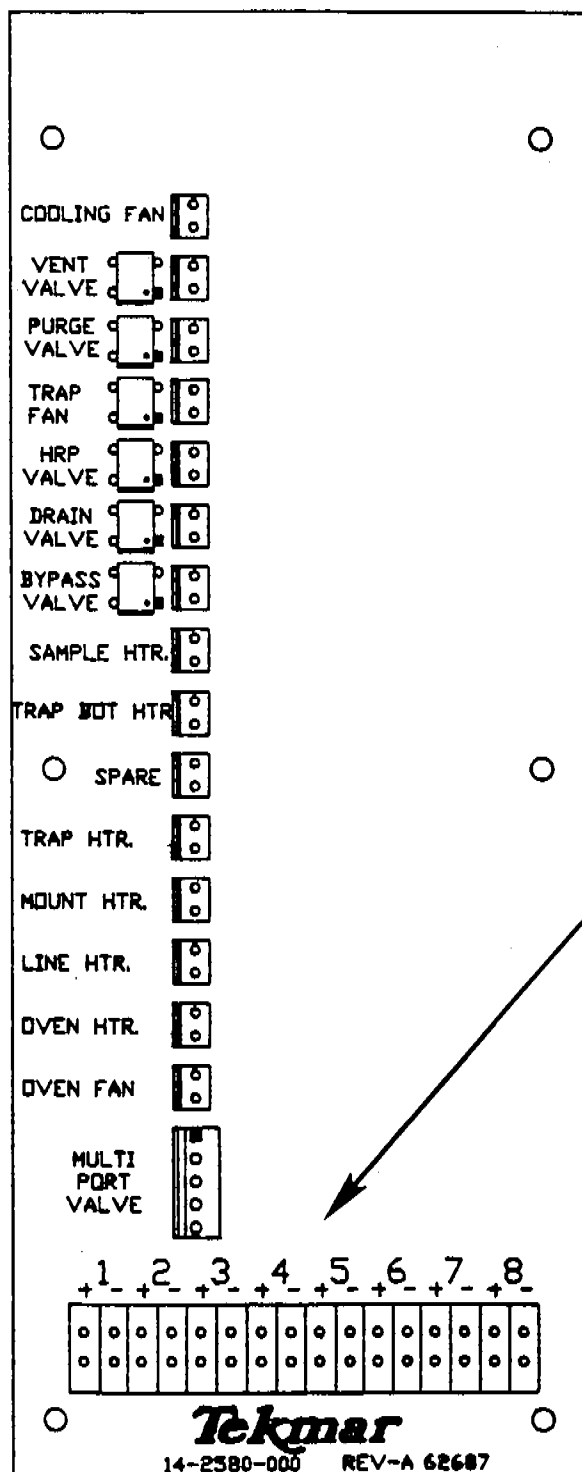
☼ INDICATES OUTPUT IS ON

P ■ SIX PORT (MULTI-PORT) VALVE IS IN THE PURGE MODE CONFIGURATION. (REFER TO FLOW DIAGRAM)

D ■ SIX PORT (MULTI-PORT) VALVE IS IN THE DESORB MODE CONFIGURATION. (REFER TO FLOW DIAGRAM)



Tekmar®

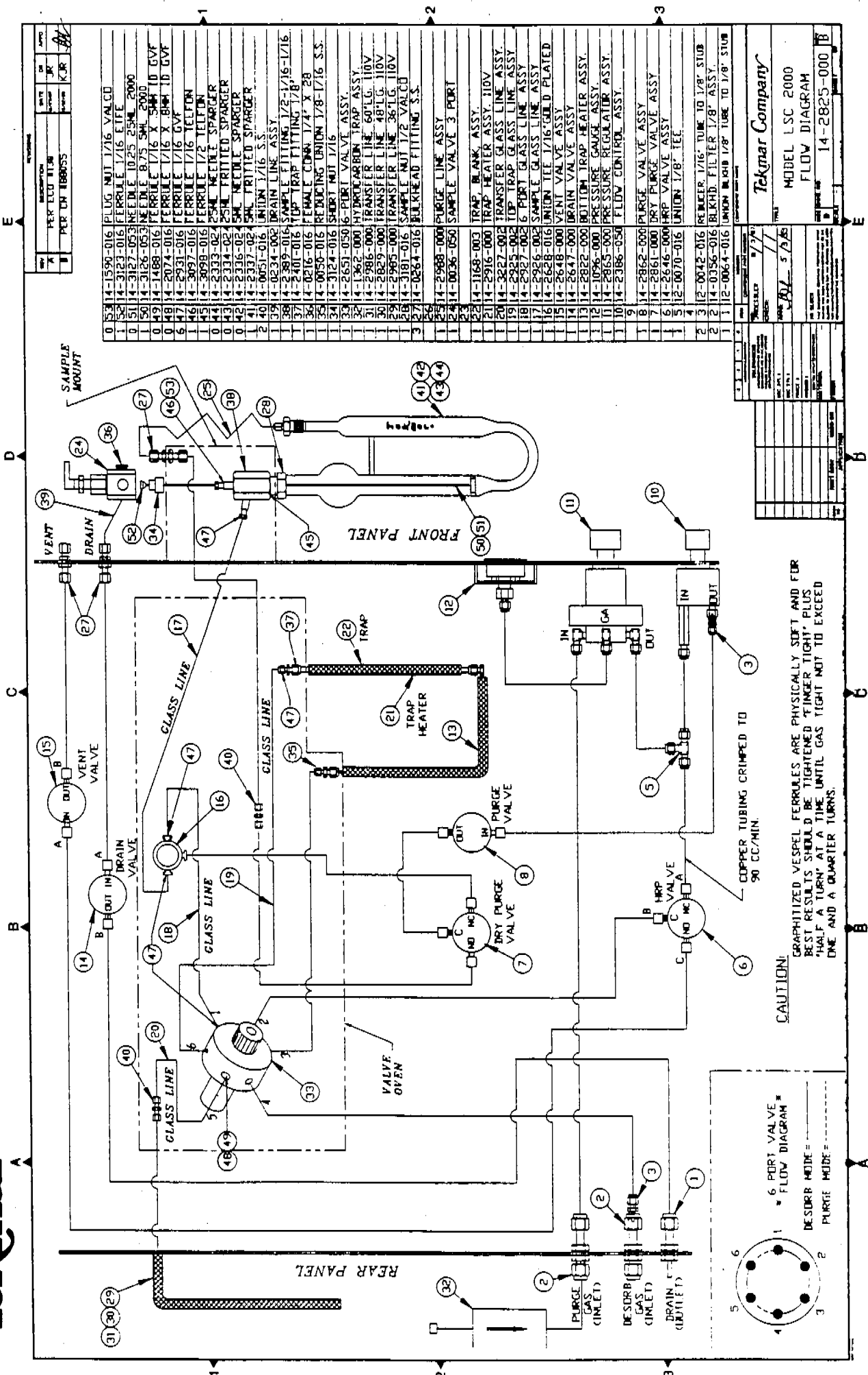


INTERIOR VIEW OF THE PROGRAM PANEL

LSC 2000 THERMOCOUPLE POSITIONS



Tekmar®



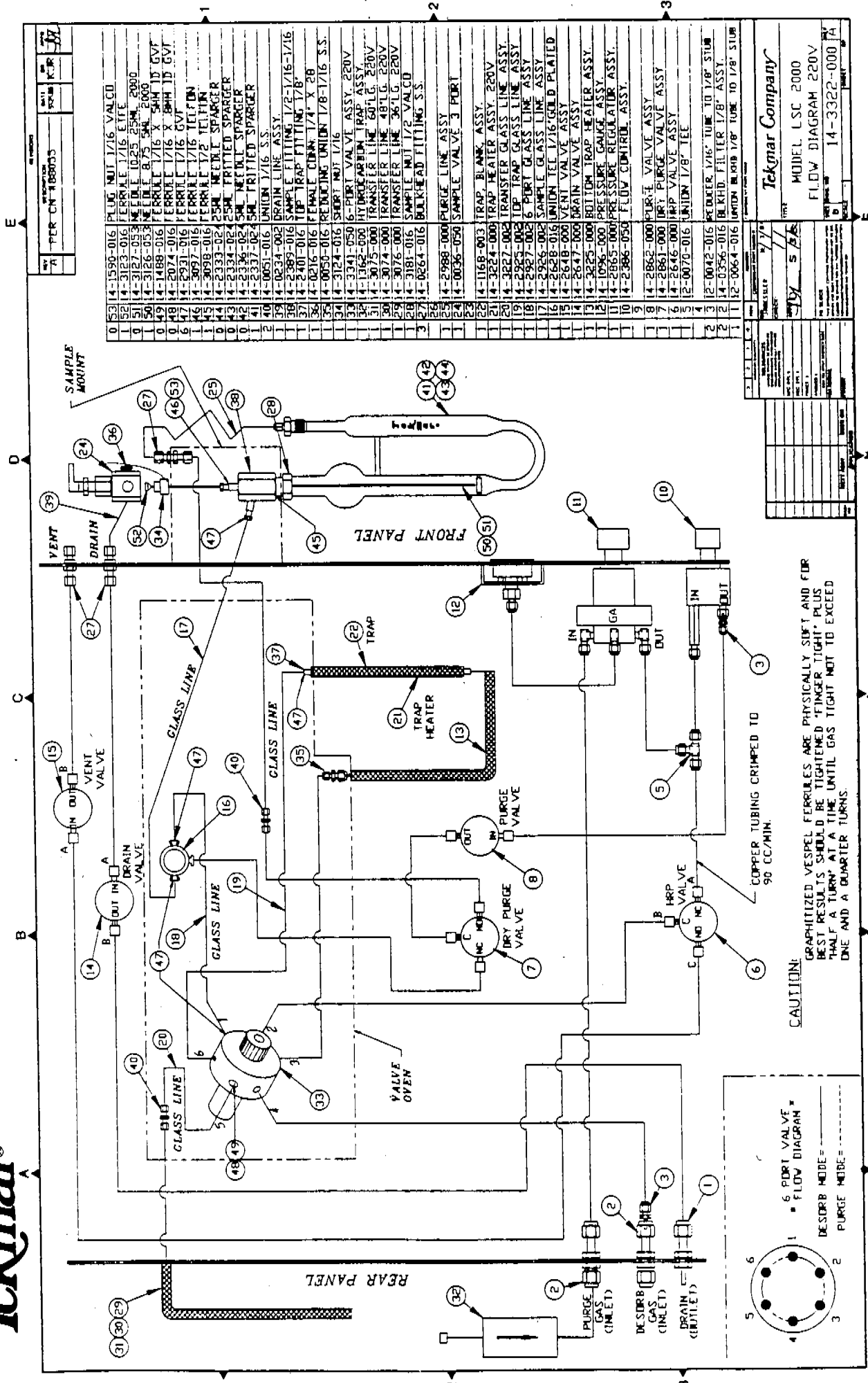
QTY	PART NO.	DESCRIPTION	REV.	DATE	BY	CHK.
1	14-1590-016	PLUG NUT 1/16 VALCO				
1	14-3123-016	FERRULE 1/16 ETFE				
0	5114-3127-053	NEEDLE 10.25 25ML 2000				
1	5014-3126-053	NEEDLE 8.75 5ML 2000				
0	4914-1488-016	FERRULE 1/16 X 5/16 10 GVF				
0	4814-2074-016	FERRULE 1/16 X 5/16 10 GVF				
6	4714-2931-016	FERRULE 1/16 GVF				
1	4614-3097-016	FERRULE 1/2 TEFCON				
0	4514-3098-016	FERRULE 1/2 TEFCON				
0	4414-2333-022	25ML HEULE SPARGER				
0	4314-2334-022	25ML HEULE SPARGER				
0	4214-2336-022	25ML HEULE SPARGER				
1	4114-2337-022	25ML HEULE SPARGER				
2	4014-0051-016	UNION 1/16 S.S.				
1	3914-0234-002	DRAIN LINE ASSY				
1	3814-2389-016	SAMPLE FITTING 1/2-1/16-1/16				
1	3714-2401-016	TOP TRAP FITTING 1/8"				
1	3614-0216-016	FEMALE CONN 1/4" X 28				
1	3514-0050-016	REDUCING UNION 1/8-1/16 S.S.				
3	3414-3124-016	SHORT NUT 1/16				
1	3314-2651-050	PORT VALVE ASSY				
1	3214-1362-000	HYDROCARBON TRAP ASSY				
1	3114-2886-000	TRANSFER LINE 60" LG 110V				
30	14-2829-000	TRANSFER LINE 48" LG 110V				
1	2914-2965-000	TRANSFER LINE 36" LG 110V				
1	2814-3181-016	SAMPLE NUT 1/2 VALCO				
3	2714-0264-016	BULKHEAD FITTING S.S.				
1	266					
1	2514-2968-000	PURGE LINE ASSY 3 PORT				
1	2414-0036-050	SAMPLE VALVE				
1	2314-1169-003	TRAP BLANK ASSY				
1	2214-2916-000	TRAP HEATER ASSY 110V				
20	14-3627-002	TRANSFER GLASS LINE ASSY				
19	14-2825-002	TOP TRAP GLASS LINE ASSY				
1	1814-2927-002	6 PORT GLASS LINE ASSY				
1	1714-2926-002	SAMPLE GLASS LINE ASSY				
1	1614-2648-016	UNION TEE 1/16" GOLD PLATED				
1	1514-2648-000	VENT VALVE ASSY				
1	1414-2647-000	DRAIN VALVE ASSY				
1	1314-2822-000	BOTTOM TRAP HEATER ASSY				
1	1214-1096-000	PRESSURE GAUGE ASSY				
1	1114-2865-000	PRESSURE REGULATOR ASSY				
1	1014-2386-050	FLOW CONTROL ASSY				
1	9					
1	8					
1	7					
1	6					
1	5					
2	4					
2	3					
1	2					
1	1					

Tekmar Company MODEL LSC 2000 FLOW DIAGRAM	
DATE	5/7/85
REV.	14-2825-000

LSC 2000 FLOW DIAGRAM (110V)



Tekmar®



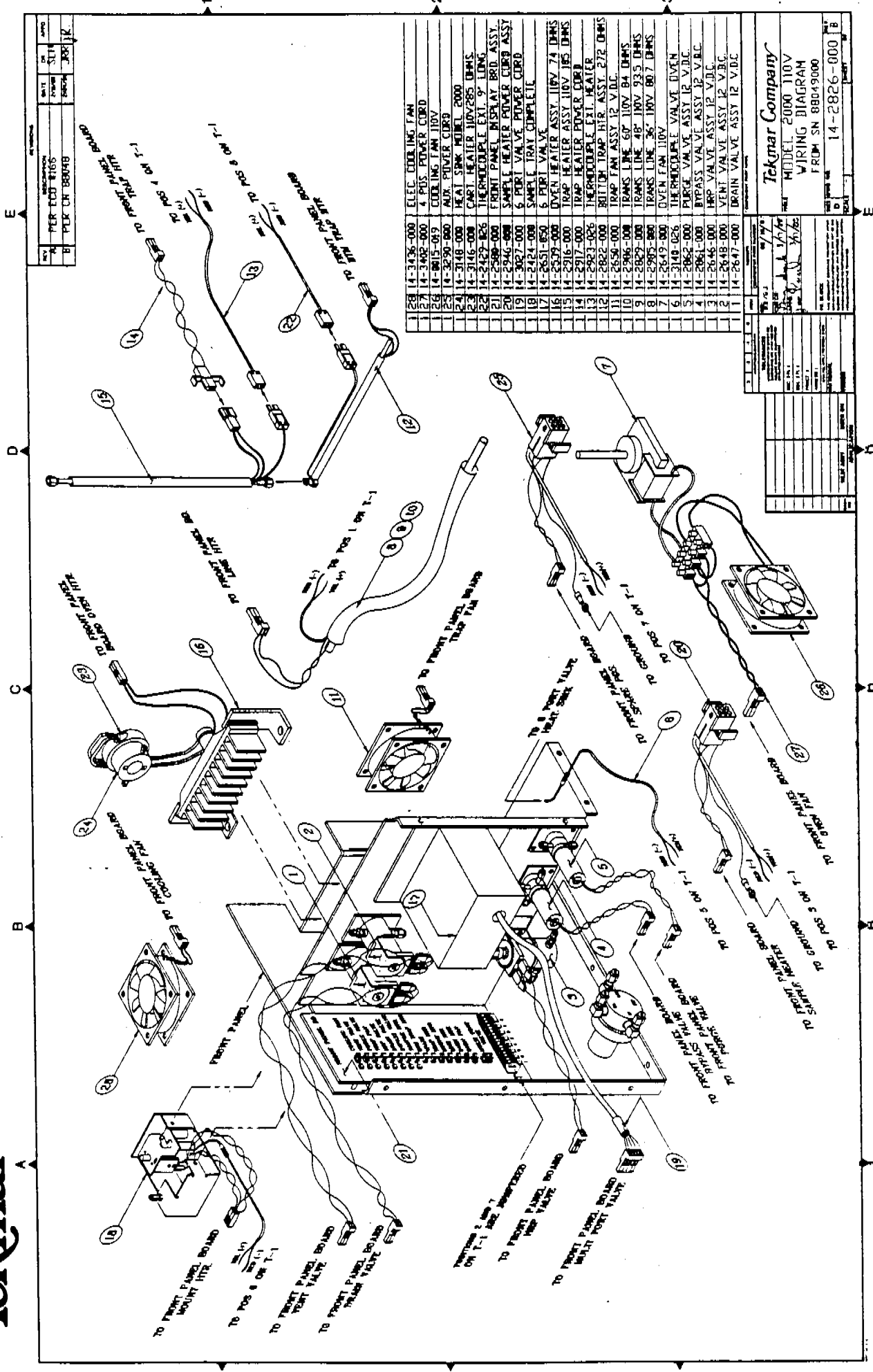
NO.	DESCRIPTION	QTY.
1	PLUG, NUT 1/16 VALCO	
2	FERRULE 1/16 ETE	
3	WIRE 10.25 25M 2000	
4	WIRE 8.75 5M 2000	
5	FERRULE 1/16 X 5/16 10 CVT	
6	FERRULE 1/16 X 3/8 10 CVT	
7	FERRULE 1/16 CVT	
8	FERRULE 1/16 TELTON	
9	FERRULE 1/2 TELTON	
10	25ML NEEDLE SPARGER	
11	25ML NEEDLE SPARGER	
12	5ML PRINTED SPARGER	
13	5ML PRINTED SPARGER	
14	UNION 1/16 S.S.	
15	DRAIN LINE ASSY.	
16	TRAP HEATER	
17	TRAP HEATER	
18	TRAP HEATER	
19	TRAP HEATER	
20	TRAP HEATER	
21	TRAP HEATER	
22	TRAP HEATER	
23	TRAP HEATER	
24	TRAP HEATER	
25	TRAP HEATER	
26	TRAP HEATER	
27	TRAP HEATER	
28	TRAP HEATER	
29	TRAP HEATER	
30	TRAP HEATER	
31	TRAP HEATER	
32	TRAP HEATER	
33	TRAP HEATER	
34	TRAP HEATER	
35	TRAP HEATER	
36	TRAP HEATER	
37	TRAP HEATER	
38	TRAP HEATER	
39	TRAP HEATER	
40	TRAP HEATER	
41	TRAP HEATER	
42	TRAP HEATER	
43	TRAP HEATER	
44	TRAP HEATER	
45	TRAP HEATER	
46	TRAP HEATER	
47	TRAP HEATER	
48	TRAP HEATER	
49	TRAP HEATER	
50	TRAP HEATER	
51	TRAP HEATER	
52	TRAP HEATER	
53	TRAP HEATER	
54	TRAP HEATER	
55	TRAP HEATER	
56	TRAP HEATER	
57	TRAP HEATER	
58	TRAP HEATER	
59	TRAP HEATER	
60	TRAP HEATER	
61	TRAP HEATER	
62	TRAP HEATER	
63	TRAP HEATER	
64	TRAP HEATER	
65	TRAP HEATER	
66	TRAP HEATER	
67	TRAP HEATER	
68	TRAP HEATER	
69	TRAP HEATER	
70	TRAP HEATER	
71	TRAP HEATER	
72	TRAP HEATER	
73	TRAP HEATER	
74	TRAP HEATER	
75	TRAP HEATER	
76	TRAP HEATER	
77	TRAP HEATER	
78	TRAP HEATER	
79	TRAP HEATER	
80	TRAP HEATER	
81	TRAP HEATER	
82	TRAP HEATER	
83	TRAP HEATER	
84	TRAP HEATER	
85	TRAP HEATER	
86	TRAP HEATER	
87	TRAP HEATER	
88	TRAP HEATER	
89	TRAP HEATER	
90	TRAP HEATER	
91	TRAP HEATER	
92	TRAP HEATER	
93	TRAP HEATER	
94	TRAP HEATER	
95	TRAP HEATER	
96	TRAP HEATER	
97	TRAP HEATER	
98	TRAP HEATER	
99	TRAP HEATER	
100	TRAP HEATER	

LSC 2000 FLOW DIAGRAM (220V)

TEKMAR COMPANY	
MODEL LSC 2000	
FLOW DIAGRAM 220V	
14-3322-000 PA	
REV.	DATE
1	5/78
2	
3	
4	
5	
6	
7	
8	
9	
10	
11	
12	
13	
14	
15	
16	
17	
18	
19	
20	
21	
22	
23	
24	
25	
26	
27	
28	
29	
30	
31	
32	
33	
34	
35	
36	
37	
38	
39	
40	
41	
42	
43	
44	
45	
46	
47	
48	
49	
50	
51	
52	
53	
54	
55	
56	
57	
58	
59	
60	
61	
62	
63	
64	
65	
66	
67	
68	
69	
70	
71	
72	
73	
74	
75	
76	
77	
78	
79	
80	
81	
82	
83	
84	
85	
86	
87	
88	
89	
90	
91	
92	
93	
94	
95	
96	
97	
98	
99	
100	



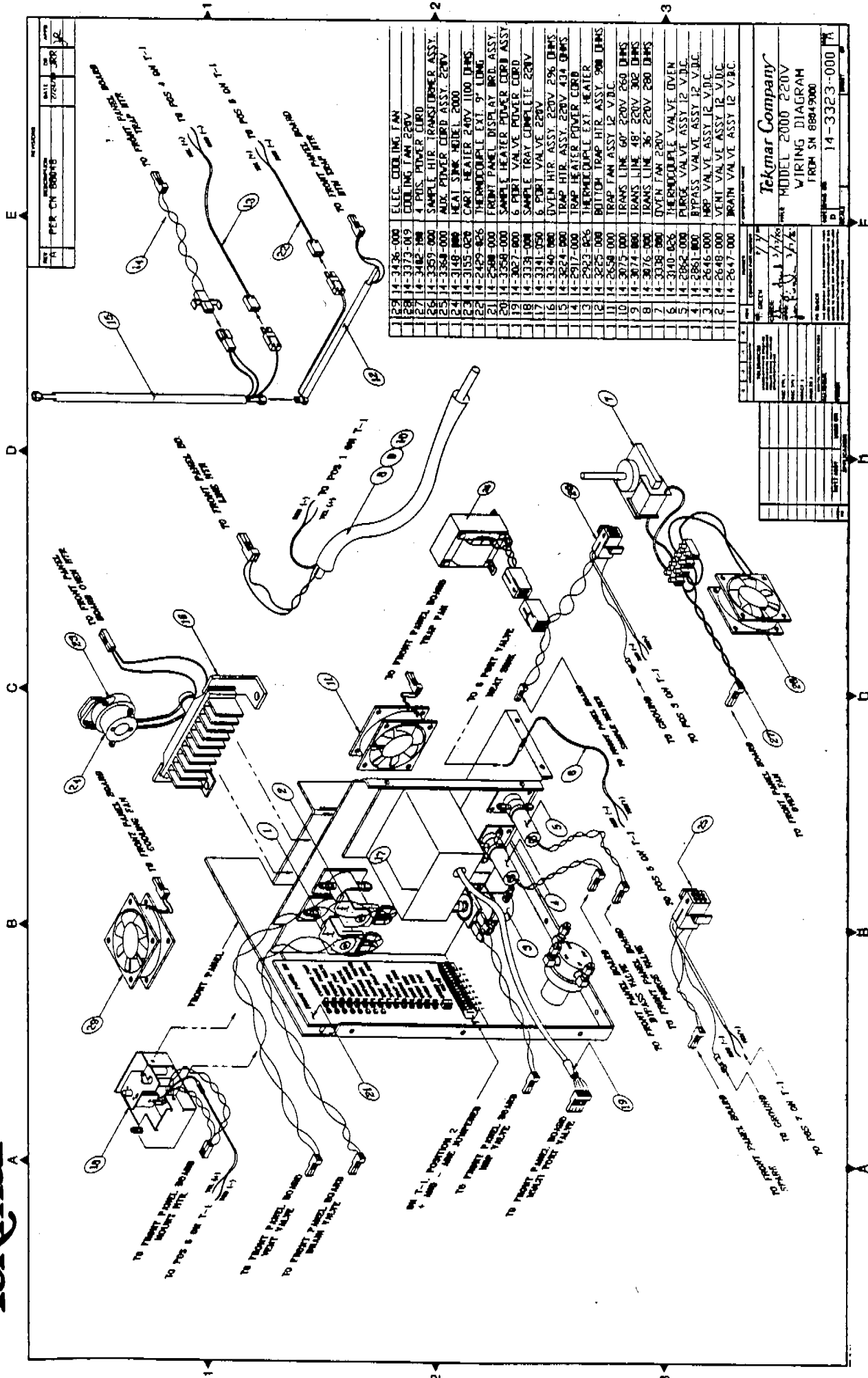
Tekmar®



LSC 2000 WIRING DIAGRAM (110V)



Tekmar®

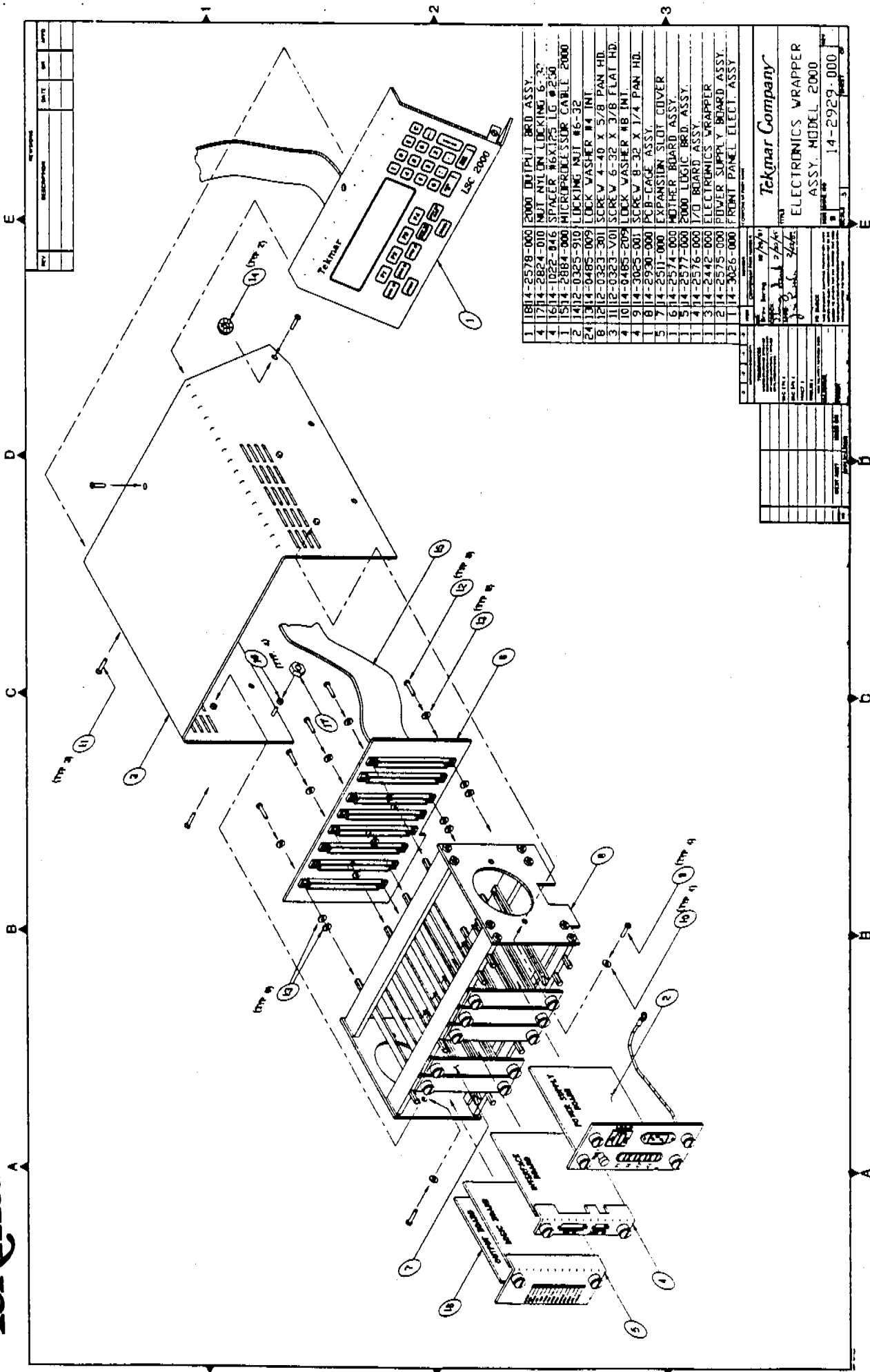


Tekmar Company
 MODEL 2000 220V
 WIRING DIAGRAM
 FROM SH 8884-9000
 14-3323-000

LSC 2000 WIRING DIAGRAM (220V)



Tekmar®



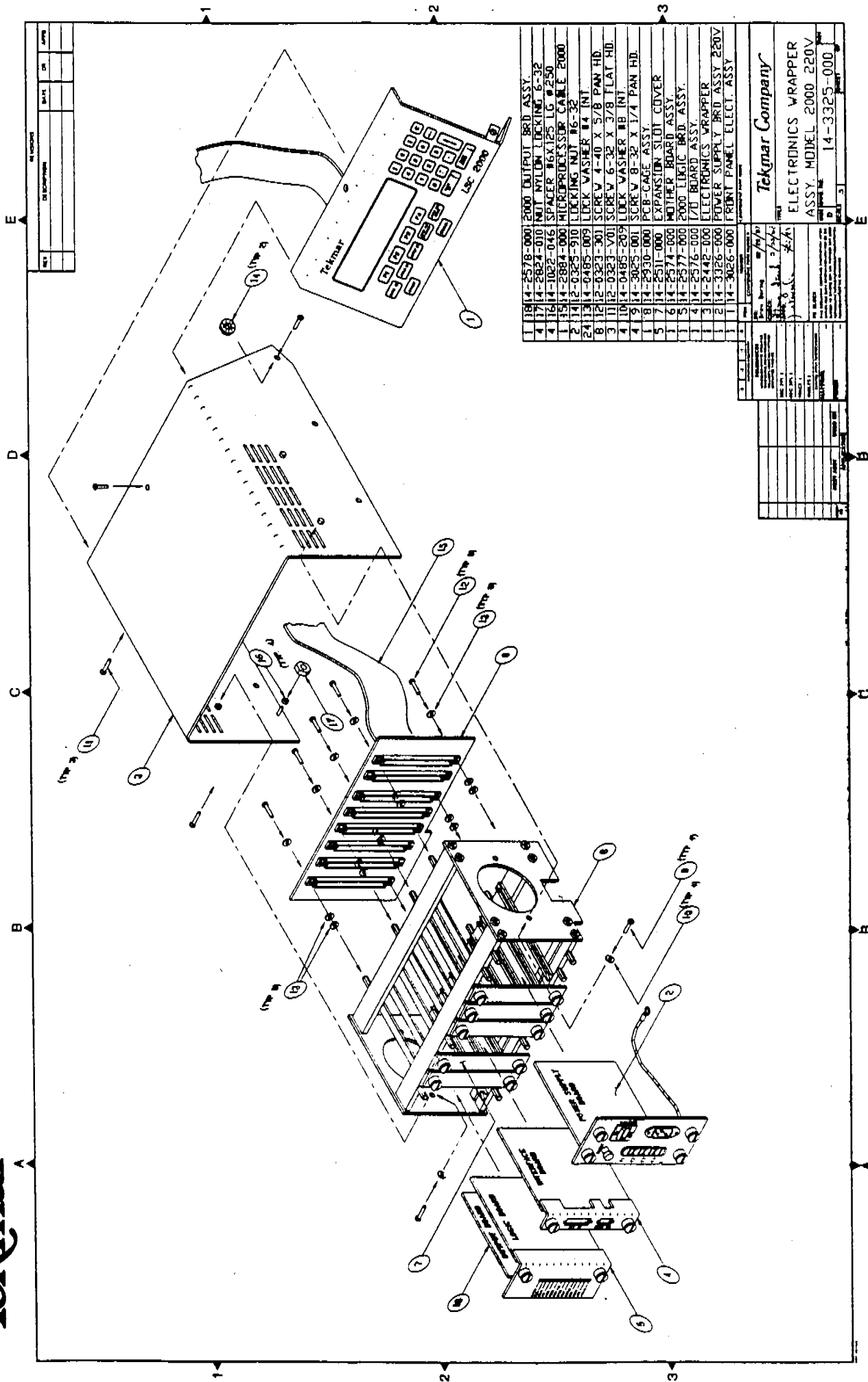
1	1814-2578-000	2000 OUTPUT BRD ASSY.
4	1714-2824-010	NUIT NYLON LOCKING 6-32
4	1614-1022-046	SPACER #6X1.25 LG #250
1	1514-2884-000	MICROPHONE SUP CABLE 2000
2	1412-0365-519	LOCKING NUT #6-32
24	1314-0485-009	LOCK WASHER #4 INT
8	1212-0323-301	SCREW 4-40 X 5/8 PAN HD.
3	1112-0323-701	SCREW 6-32 X 3/8 FLAT HD.
4	1014-0485-209	LOCK WASHER #8 INT.
4	914-3025-001	SCREW 8-32 X 1/4 PAN HD.
1	814-2930-000	PCB-CAGE ASSY.
5	714-2510-000	EXPANSION SLOT COVER
1	614-2574-000	MOTHER BOARD ASSY.
1	514-2577-000	2000 LOGIC BRD ASSY.
1	414-2576-000	I/O BOARD ASSY.
3	314-2412-000	ELECTRONICS WRAPPER
1	214-2575-000	POWER SUPPLY BOARD ASSY.
1	114-3026-000	FRONT PANEL ELECT. ASSY.

Tekmar Company ELECTRONICS WRAPPER ASSY. MODEL 2000	
DATE: _____ BY: _____ REV: _____	14-2929-000

LSC 2000 ELECTRONICS WRAPPER ASSEMBLY (110V)



Tekmar®

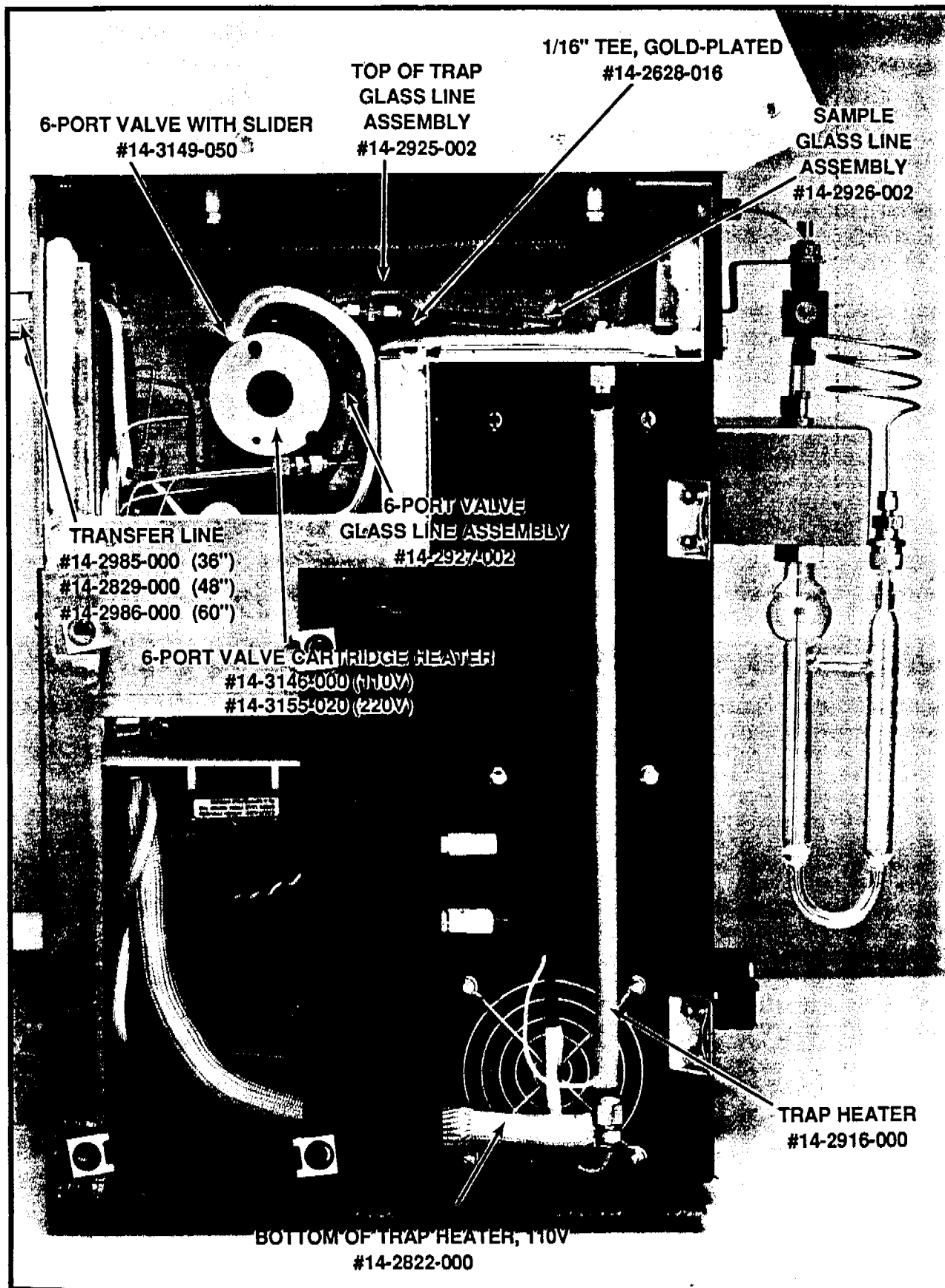


LSC 2000 ELECTRONICS WRAPPER ASSEMBLY (220V)

Tekmar Company
 ELECTRONICS WRAPPER
 ASSY. MODEL 2000 220V
 P. No. 14-3325-000



Tekmar



6-PORT VALVE WITH SLIDER
#14-3149-050

TOP OF TRAP
GLASS LINE
ASSEMBLY
#14-2925-002

1/16" TEE, GOLD-PLATED
#14-2628-016

SAMPLE
GLASS LINE
ASSEMBLY
#14-2926-002

TRANSFER LINE
#14-2985-000 (36")
#14-2829-000 (48")
#14-2986-000 (60")

6-PORT VALVE
GLASS LINE ASSEMBLY
#14-2927-002

6-PORT VALVE CARTRIDGE HEATER
#14-3146-000 (110V)
#14-3155-020 (220V)

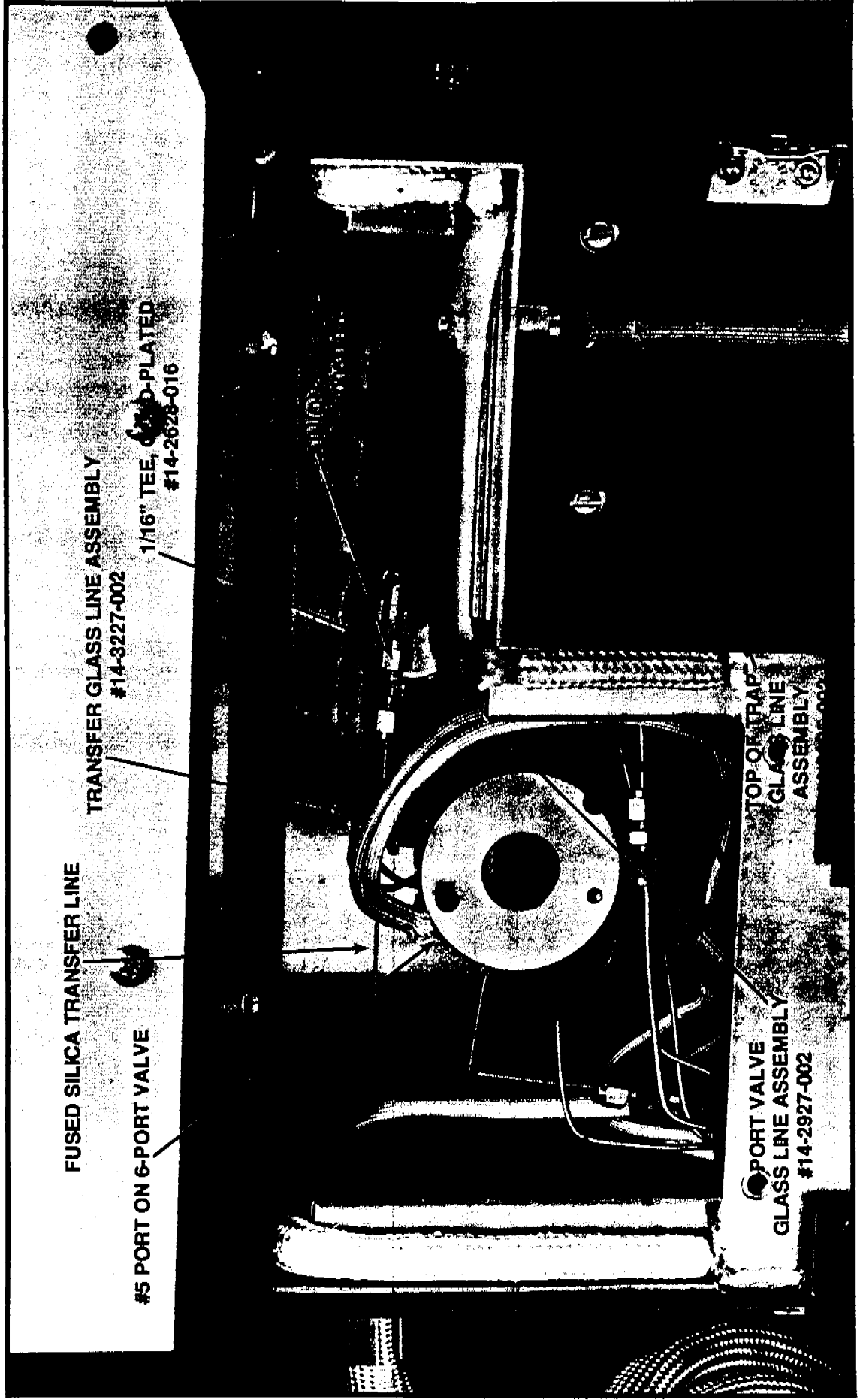
TRAP HEATER
#14-2916-000

BOTTOM OF TRAP HEATER, 110V
#14-2822-000

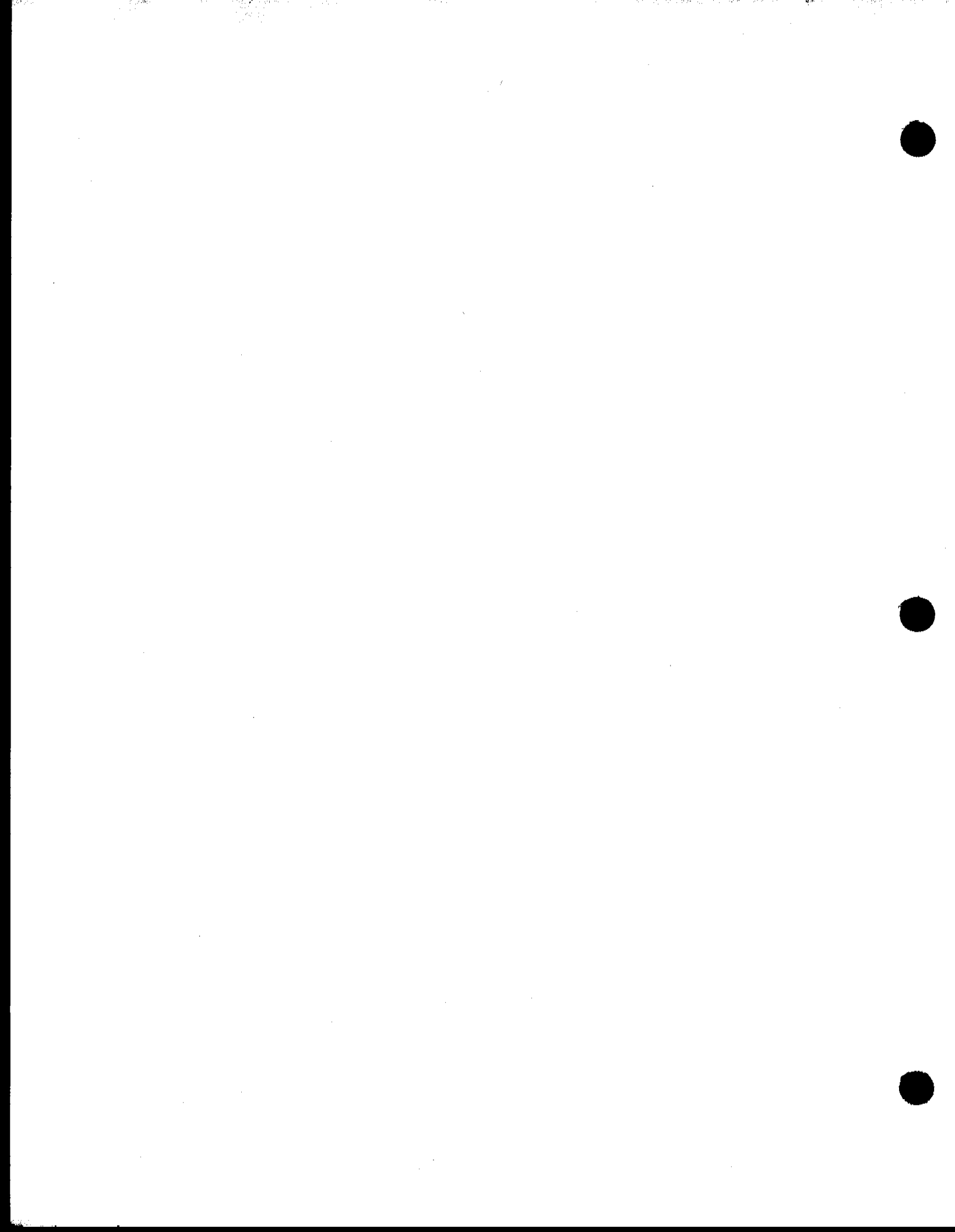
LSC 2000 VALVE OVEN & TRAP AREA



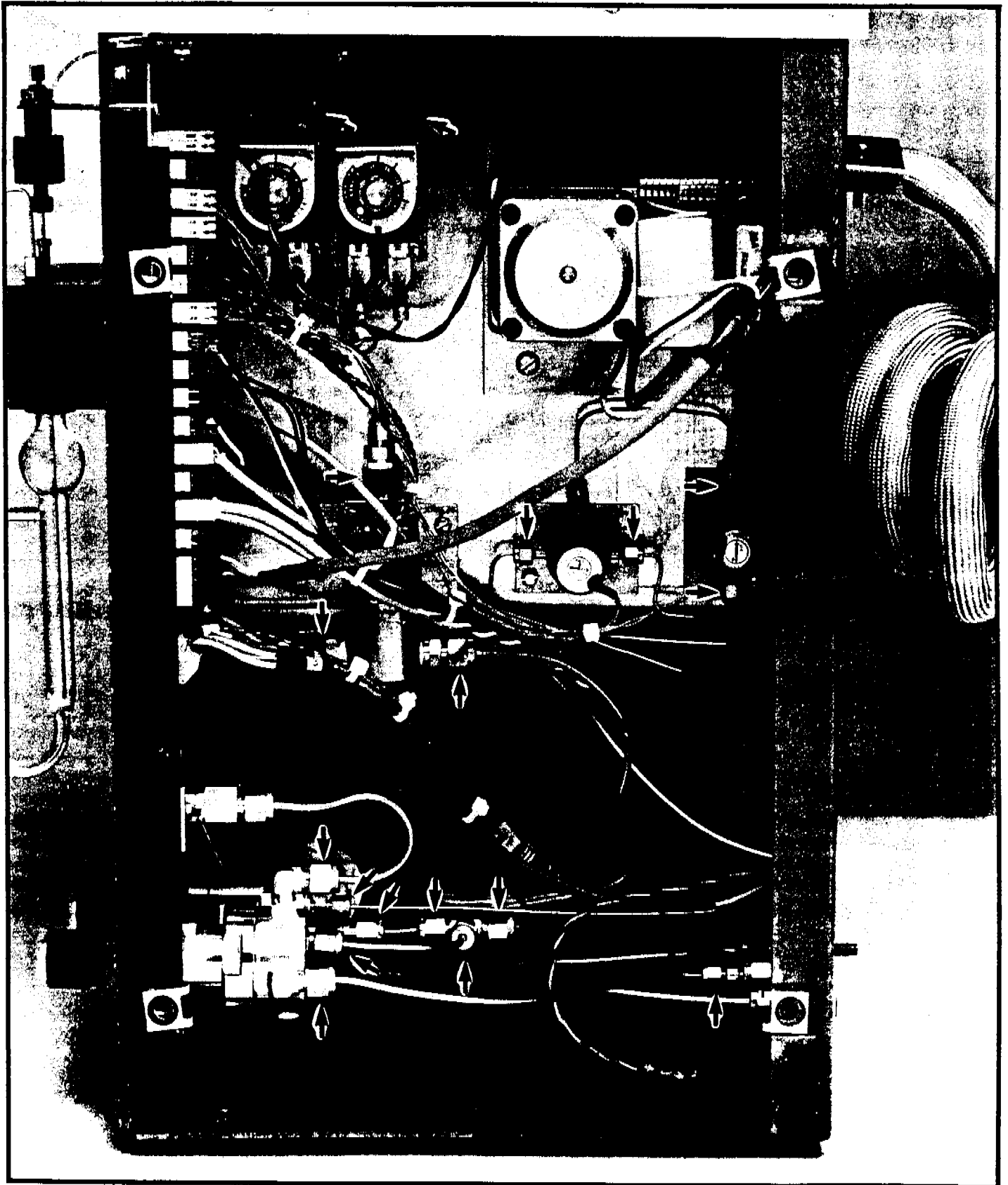
Tekmar®



LSC 2000 VALVE OVEN



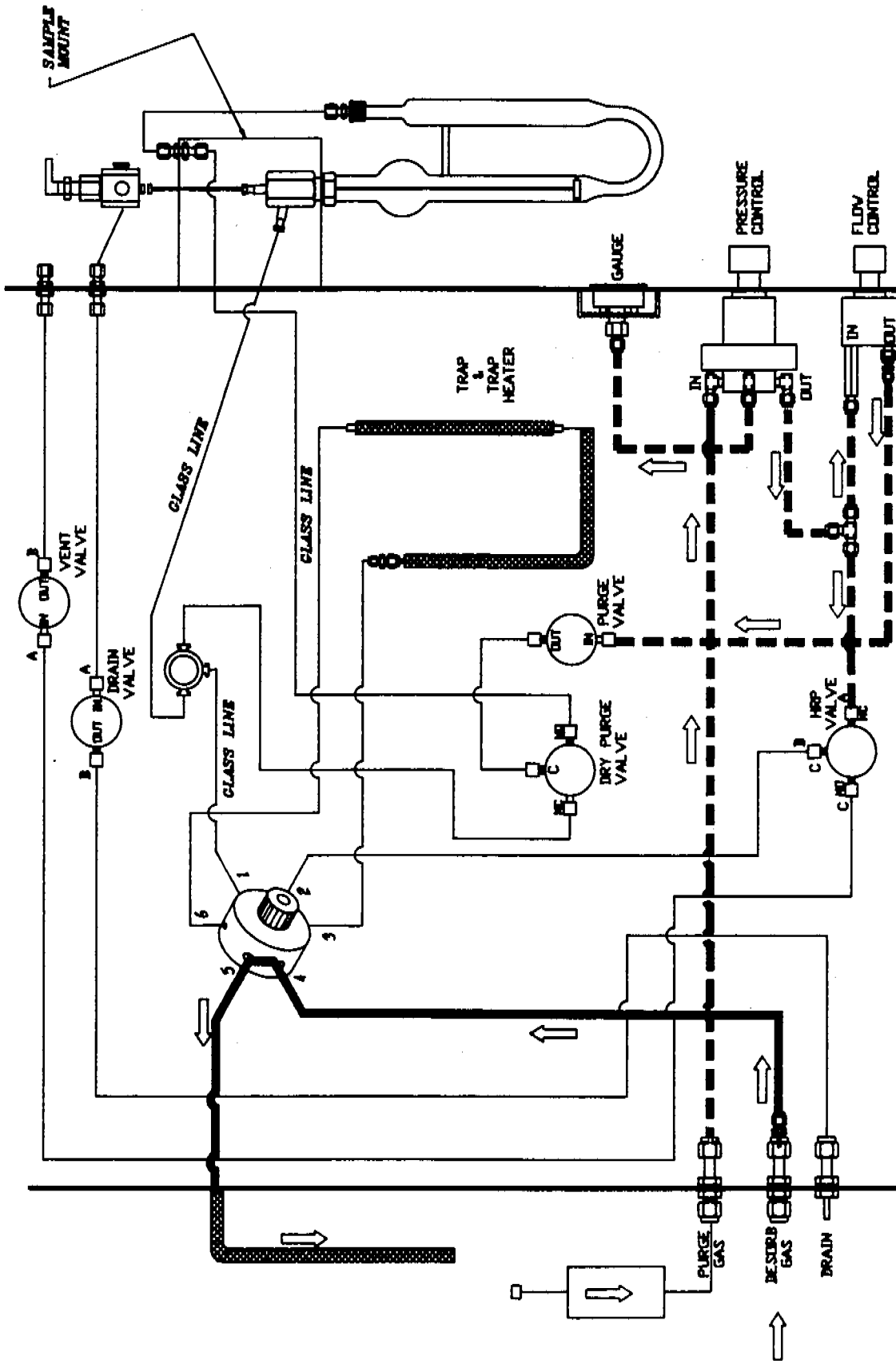
Tekmar[®]



LSC 2000 LEAK CHECK DIAGRAM



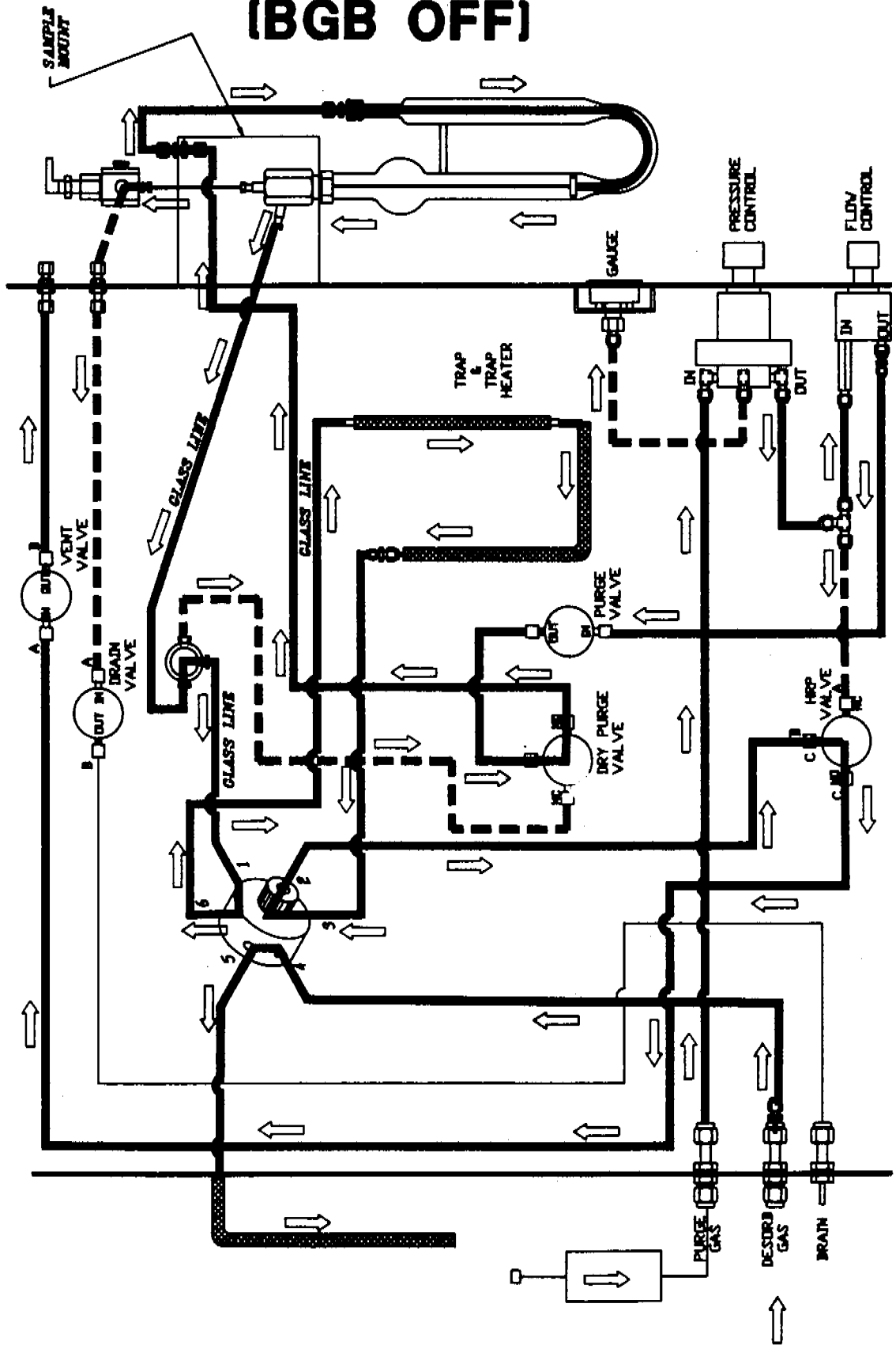
STANDBY MODE



----- DENOTES PRESSURE ONLY



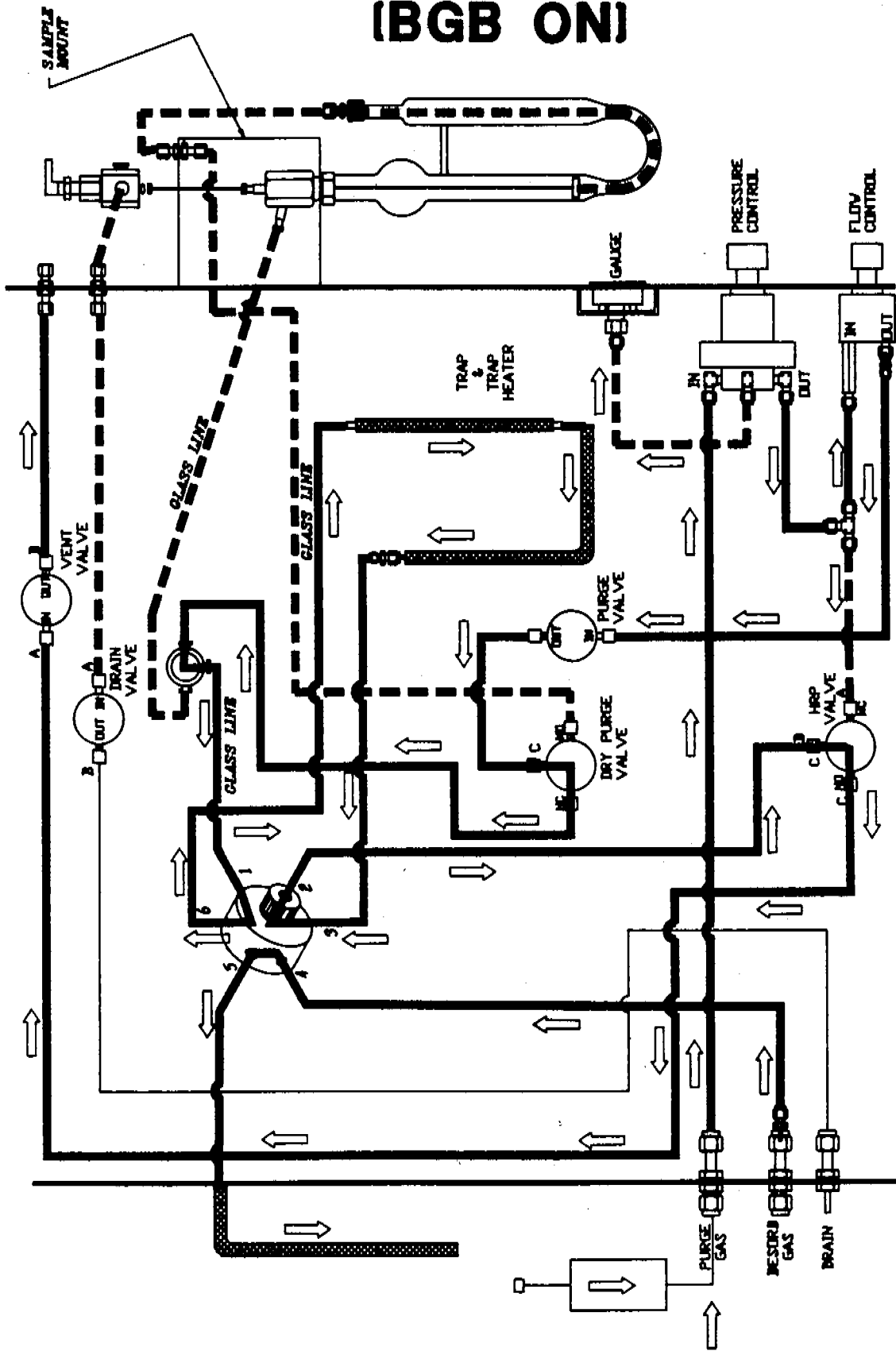
PURGE/BAKE MODE (BGB OFF)



----- DENOTES PRESSURE ONLY



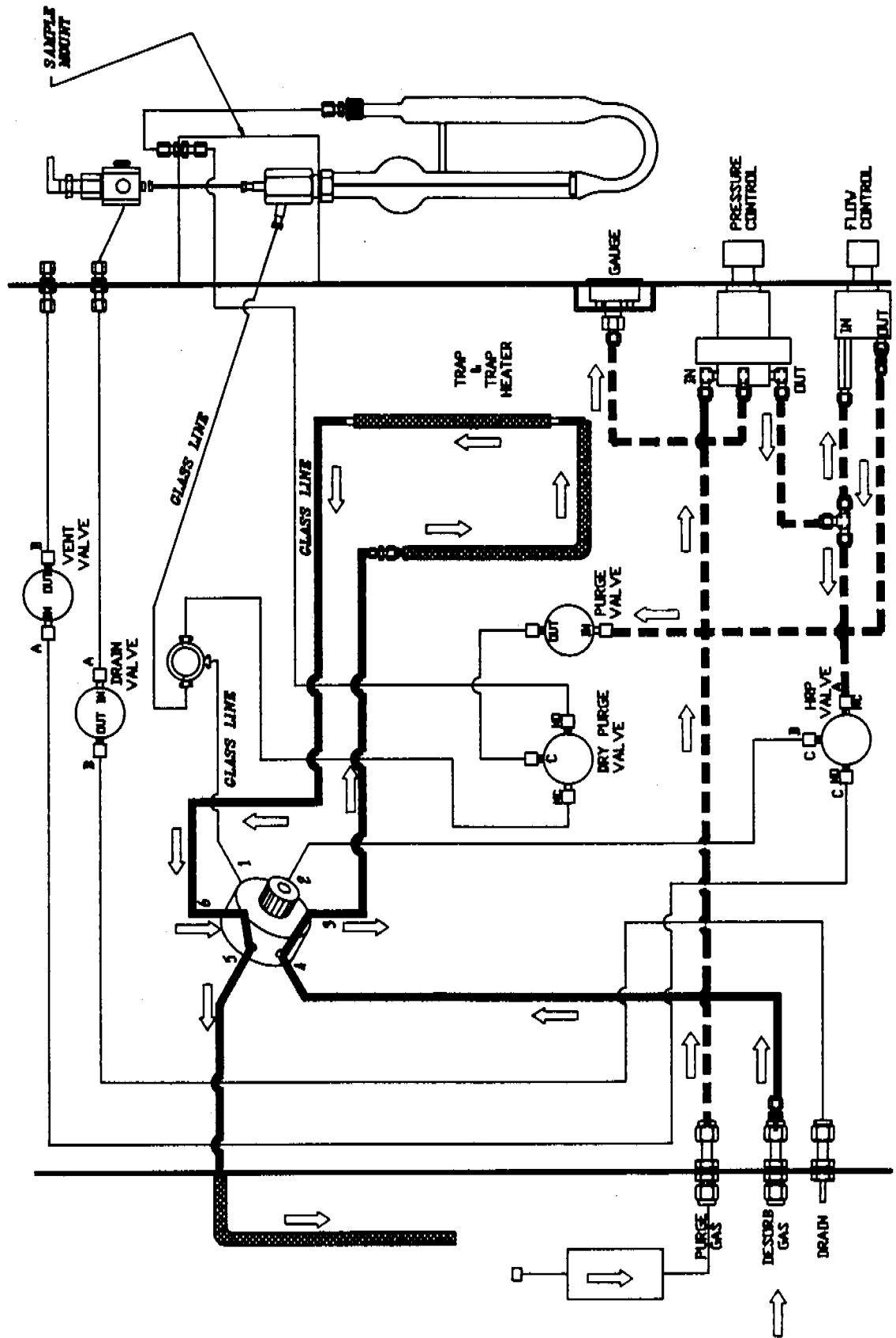
DRY PURGE/BAKE MODE (BGB ON)



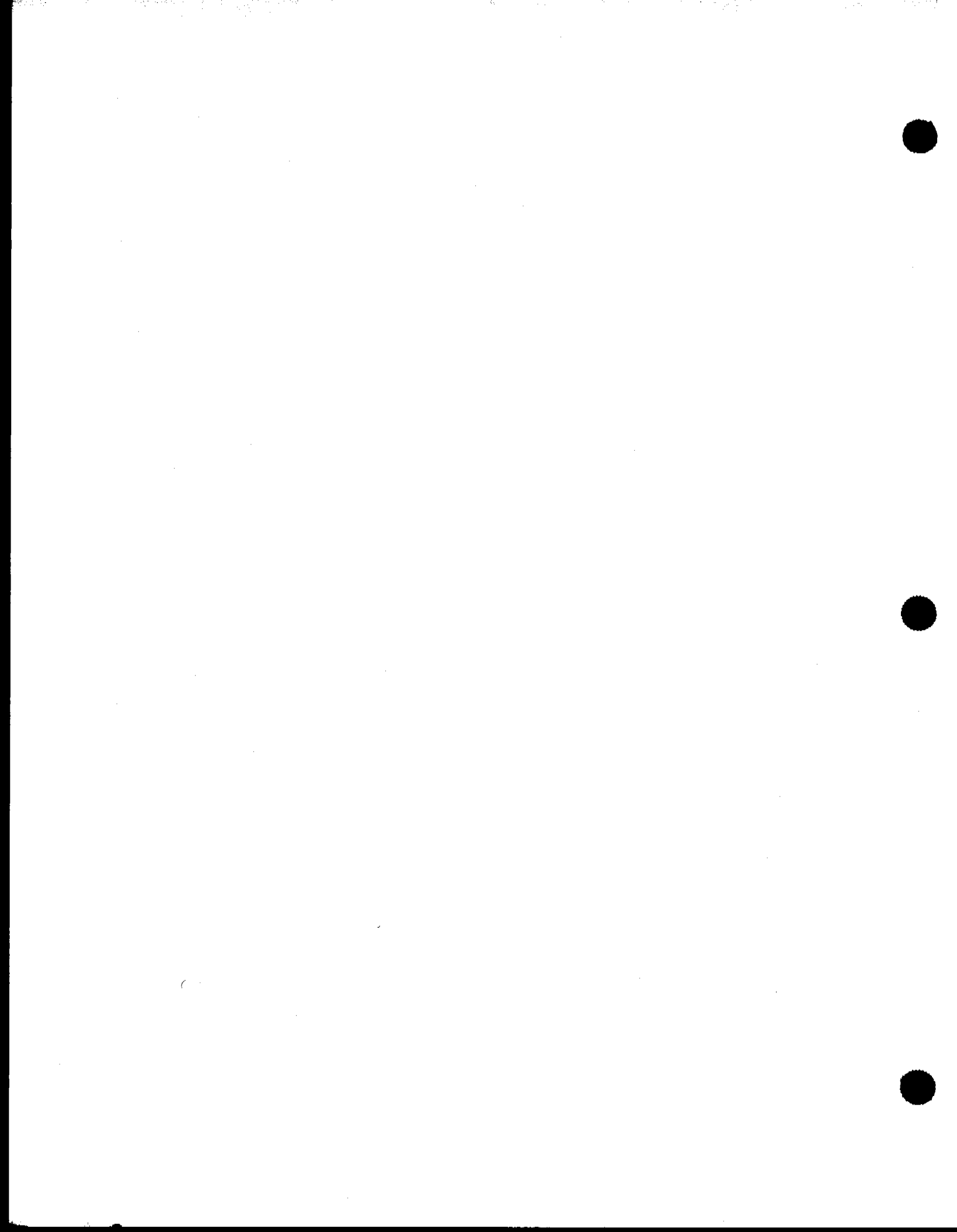
----- DENOTES PRESSURE ONLY



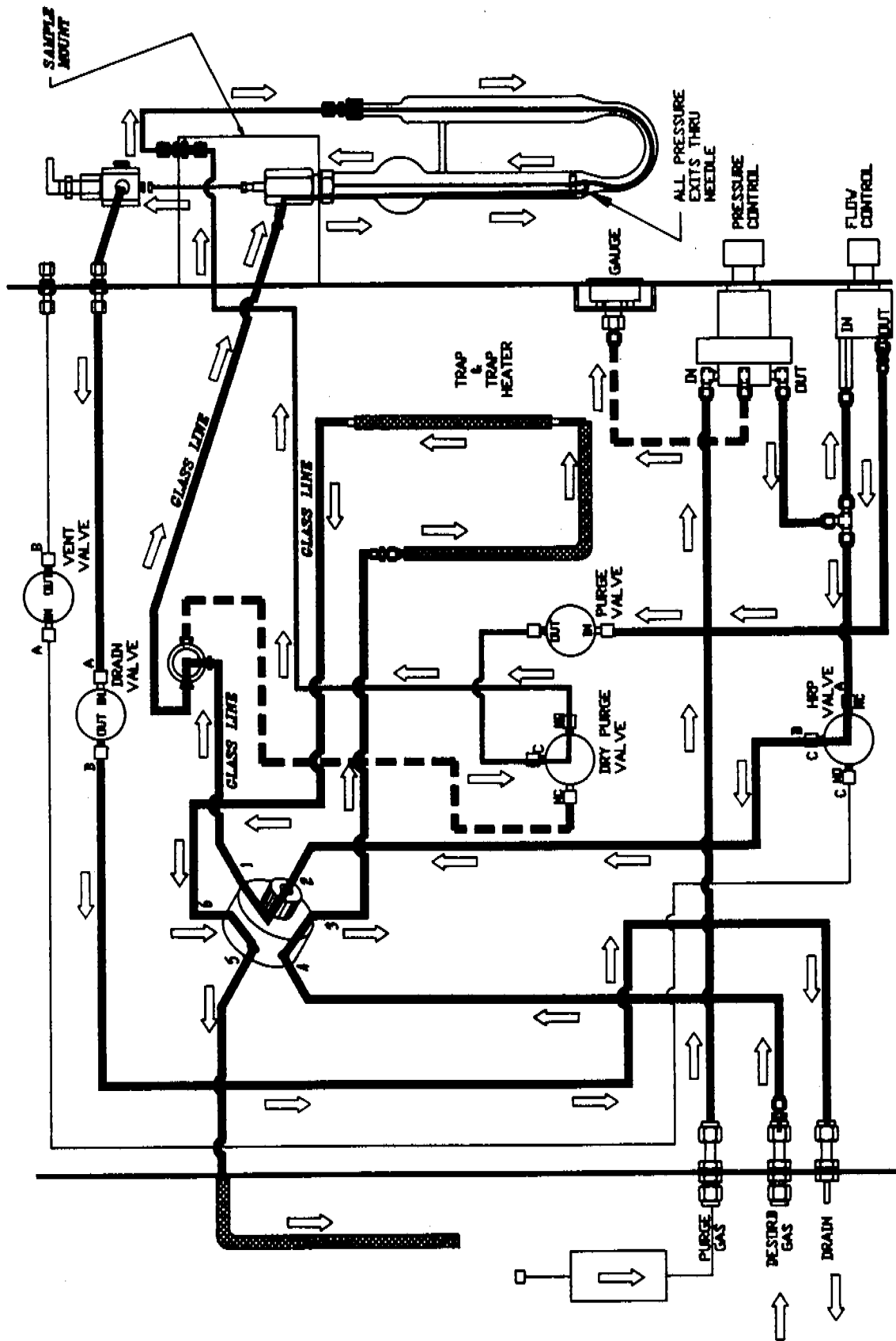
DESORB MODE



----- DENOTES PRESSURE ONLY



DESORB & DRAIN MODE





- A** | Auto Drain, 50
ALS 2016, Accessories section
ALS 2032, Accessories section
- B** | Bake mode, 31
Bake Gas Bypass, 51
Baud rate, 23
Blank trap, 4, 17
- C** | Capillary columns, connection to, 13
Capillary Interface, Accessories section
Carrier gas connection, 12
 Diagram of, 9
Clock, 42
Cooldown mode, 30
CPU (Microprocessor) board, Section 8
- D** | Desorb mode, 31
Desorb preheat mode, 31
Desorb ready mode, 30
DIP switches, 73
Drain tubing (on rear panel), 20
Drain line (on sample valve), 7
Dry purge mode, 30
- E** | Electronics module connection, Section 8
Electronic troubleshooting, 69
EPA procedures, 64
- F** | Fritted disc sparger, 7
Fused silica tubing
 Installation of, 11
 Handling of, 19
Fuses
 Location of, 20
 Fuse ratings, 73
- G** | G.C. (Gas Chromatograph)
 Electronic connection to the LSC 2000, 20
 Pneumatic connection to the LSC 2000, 9
Glassware
 Sizes available, 2
 Installation of, 7
 Cleaning of, 67

INDEX

- H** Hydrocarbon trap
Installation, 9
Photograph of, Section 8
- I** Inject mode, 31
Instrument configuration (for accessories), 43
Interface cables, 73
Introductory screen, 21
I/O board
Location of, 20
Photograph of, Section 8
- K** Kit Box Assembly
Contents of, 6
Photograph of, Section 8
- L** LCD (Liquid Crystal Display)
Specifications, 2
Interior photograph of, Section 8
Viewing angle adjustment of, 33
Leak checking, 16
Logic board
Location of, 20
- M** Method parameter values, 46
Motherboard, Section 8
- N** Needle sparger, 8
Needle bushing
Location of, 7
- O** Operating temperature requirements, 3
Output board,
Location of, 20
Photograph of, Section 8
Output operational summary, Section 8

- P**
- Packed column injection ports, 12
 - Plug septa
 - Location of, 7
 - Power supply board
 - Location of, 20
 - Photograph of, Section 8
 - Preheat mode, 29
 - Prepurge mode, 29
 - Program panel, 27
 - Interior view of, Section 8
 - Purge bulkhead
 - Location of, 7
 - Purge gas requirements, 3
 - Purge line
 - Location of, 7
 - Purge mode, 29
 - Purge ready mode, 28
- Q**
- Quantitating a run, 59
- R**
- RAM (Random Access Memory), 34
 - Relative humidity requirements, 3
 - Reset switch,
 - Location of, 20
- S**
- Sampler mount
 - Location of, 7
 - Sample valve
 - Location of, 7
 - Self tests, 32
 - Serial port (RS232C)
 - Location of, 20
 - Description of, 22
 - Specifications, 3
 - Six-port valve
 - Location of, 11, Section 8
 - Specifications, 2
 - Standby mode, 27
 - STEP TO BAKE, 50
 - STEP TO STANDBY, 49
 - Storage temperature requirements, 3

T

Thermocouple positions, Section 8

Transfer line, heated, 11

Traps

Blank traps, 4, 17

Changing a trap, 17

Identifying a trap (trap numbers), 18

Conditioning a new trap, 66

Optional traps, 2

Tubing

Specifications, 2

Drain tubing connection, 20

U

Unpacking the unit, 4

Utilities, 3

V

Valving, 2

Voltage specifications, 3

W

Warnings, 1

Wiring diagram, Section 8